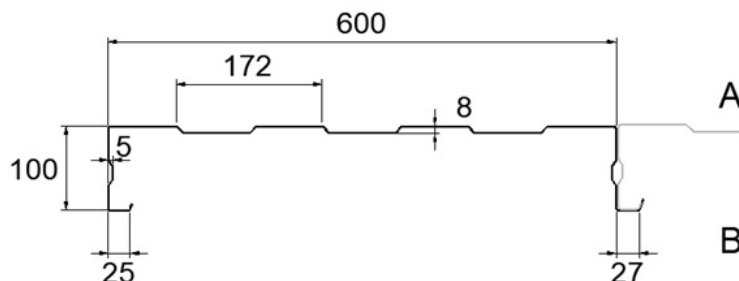


TECHNICAL DATA SHEET

SAB B100/600



Gauge	Weight
0,75 mm	8,67 kg/m ²
0,88 mm	10,18 kg/m ²
1,00 mm	11,57 kg/m ²
1,13 mm	13,07 kg/m ²
1,25 mm	14,46 kg/m ²
1,50 mm	17,35 kg/m ²

STEEL GRADE

Yield strength minimum 320 N/mm², zinc layer can be Z, AZ, ZA or ZM.

SUSTAINABILITY

Environmentally relevant product information (EPD) are published on www.sabprofil.com.

QUALITY CONTROLE

We guarantee that the product has been produced according the valid standards and directives

REACTION TO FIRE

Incombustible, class A1 according to EN 13501-1 for coating systems unto 65 µm

SPANS

Depend on wind loads, deflection limitations and safety factors.

See our SAB-brochure for more information

STANDARDS

Production according ISO 9001, ISO 14001, ISO 45001 and BES 6001

CE-marking and Declaration of Performance according EN 1090

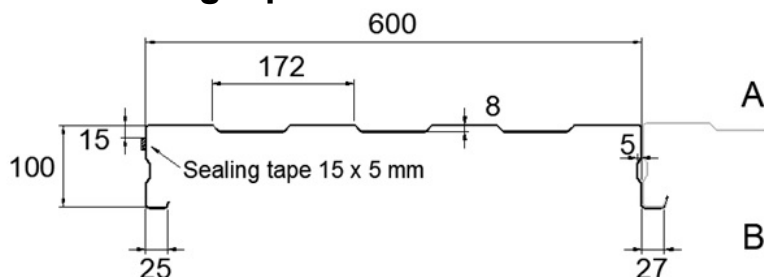
Tolerances according PPA-Europe Quality Regulations

Steel thickness: EN 10143 is used as a basis for the gauge tolerances, applied to the steel core only and excluding zinc layer and organic coating.

IJsselstein, June 2025

TECHNICAL DATA SHEET

SAB B100/600 with sealing tape



Gauge	Weight
0,75 mm	8,67 kg/m ²
0,88 mm	10,18 kg/m ²
1,00 mm	11,57 kg/m ²
1,13 mm	13,07 kg/m ²
1,25 mm	14,46 kg/m ²
1,50 mm	17,35 kg/m ²

STEEL GRADE

Yield strength minimum 320 N/mm², zinc layer can be Z, AZ, ZA or ZM.

SUSTAINABILITY

Environmentally relevant product information (EPD) are published on www.sabprofil.com.

SEALING TAPE

Impregnated grey polyurethane foam (with flame retardants)

Fire classification B2 according to DIN 4102

Air permeability $\alpha < 0,1 \text{ m}^3/(\text{hm}(\text{daPa}))$ at 66% compression

QUALITY CONTROLE

We guarantee that the product has been produced according the valid standards and directives

REACTION TO FIRE

Incombustible, class A1 according to EN 13501-1 for coating systems unto 65 μm

SPANS

Depend on wind loads, deflection limitations and safety factors.

See our SAB-brochure for more information

STANDARDS

Production according ISO 9001, ISO 14001, ISO 45001 and BES 6001

CE-marking and Declaration of Performance according EN 1090

Tolerances according PPA-Europe Quality Regulations

Steel thickness: EN 10143 is used as a basis for the gauge tolerances, applied to the steel core only and excluding zinc layer and organic coating.

IJsselstein, June 2025